



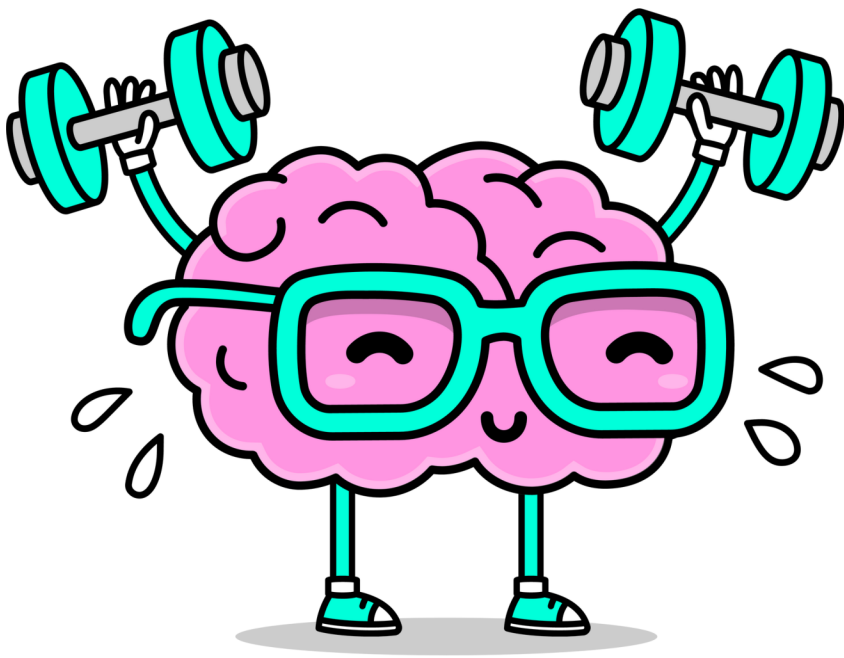
MENTAL HEALTH & WELLNESS FAIR

May 1st, Doors open at 5 PM

📍 Warwick Veterans Memorial Middle School

Let's
TALK
about
MENTAL
health

GIVEAWAYS, RESOURCE FAIR, YOGA, GAMES,
ARTS & CRAFTS, AND MORE!









Kiwanis
KENT COUNTY, RHODE ISLAND

SPEAK WITH THESE AGENCIES AND MANY MORE!